

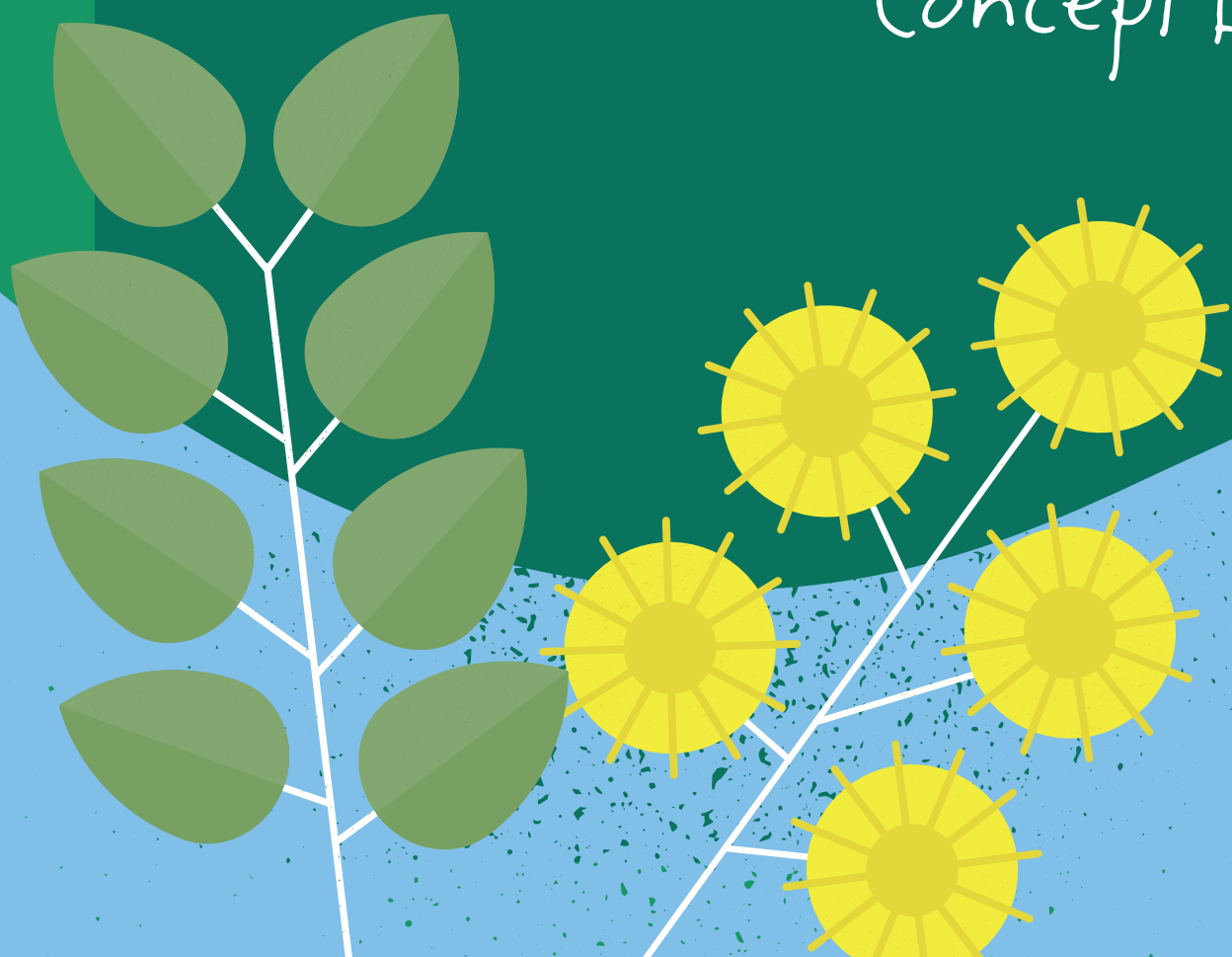


the place
to live

PENDERS PARK



All Abilities Playspace - Stage 2
Concept Design - August 2020



A vision that is
inclusive,
sustainable and
welcoming.

About the playspace

The new, all abilities playspace is the culmination of several years of community engagement and has been driven by a community-led Project Control Group. This project delivers on the community vision to create an inclusive, gathering place for our diverse community to enjoy.

This playspace was identified by the community as the top priority in the Penders Park Master Plan. The playspace design was developed in collaboration with a community-led Project Control Group in 2019 and is being delivered in stages. Stage 1 of the playspace was completed in August 2020 and following Council's approval for stage 2, plans are now underway for delivery.

What's included in Stage 2?

Council worked collaboratively with the community to understand the community aspirations and priorities for Stage 2 of the playspace. We are excited to share the concept design (over page) based on the feedback received from the community.

Stage 2 features

- inclusive and accessible playspace and landscape design.
- more challenging and all abilities activities for senior playspace users.
- more physically engaging experiences.
- opportunities for social engagement between all abilities users and their peers.
- responding to the park's heritage aspects.
- enhancing biodiversity and habitat for local fauna.
- more shade and canopy trees.
- sustainably sourced materials.
- accessible picnic areas.

The proposed design for Stage 2 includes many new, native canopy trees which are intended to provide more shade over the new playspace areas.

Trees and Vegetation

There is one exotic tree in poor health that is planned to be removed as part of stage two and around twenty native trees are planned to be planted.

What's planned for future implementation?

The Penders Park Master Plan identifies other community priorities including new picnic shelters and changing places toilet facilities.

Any new picnic shelter and changing places toilet facilities will be considered by Council as part of future park improvements.



Where are we in the process?



PENDERS PARK MASTER PLAN

The master plan was created in collaboration with a community-led Project Control Group and extensive community engagement activities. Council adopted the master plan in 2019.



STAGE 1 PLAYSPACE

Council collaborated with the community in early 2020 to finalise the design and delivery of Stage 1 of the new, all-abilities playspace. Stage 1 was implemented in 2020.



STAGE 2 PLAYSPACE

Council checked-in with the community to confirm priorities for Stage 2, based on earlier designs that were prepared in collaboration with the community Project Control Group.

WE ARE
HERE



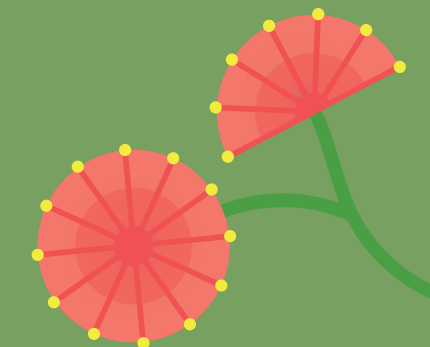
IMPLEMENTATION

Council approved the updated concept design for Stage 2, based on the community priorities, in late August. Council will continue the detailed design and implementation of the second and final stage of the new playspace.

Community engagement activities were held in July 2020 to hear from the community what the aspirations and priorities were for stage two of the playspace.

PENDERS PARK

Stage 2 - Playspace Indicative Layout



Legend

- | | | | |
|--|---|--|------------------------------------|
| | New canopy trees | | New pathway, sealed & accessible |
| | New large shade trees, native & flowering | | New rubber play surface |
| | Declining exotic tree to be removed | | New soft fall tanbark play surface |
| | Inclusive seat for flying fox | | New granitic sand area |
| | Refurbished picnic/BBQ areas | | Landscaped area / planted buffer |
| | Existing water fountain | | |

Proposed Play Activities:

The community told us that these pieces of play equipment were the most important to incorporate into Stage 2:

- 1 Accessible inground trampoline
- 2 Inclusive flying fox with a harness and pommel seat
- 3 Forest rope climbing challenge with inclusive spider net
- 4 Inclusive, inground spinning carousel
- 5 Timber gathering space on accessible surface

Tender Options:

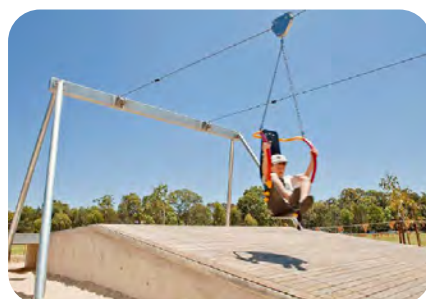
If there is budget left over after the higher priority play elements have been tendered, the following items could be added:

- * Sensory wall, musical elements
- * Swing set with basket, harness and standard seats.
- * Spinning spicas (stand-up spinners)
- * Picnic shelter

Note: All images shown are indicative & subject to change.



1 Inground Trampolines



2 Inclusive Flying Fox



3 Rope climbing challenge



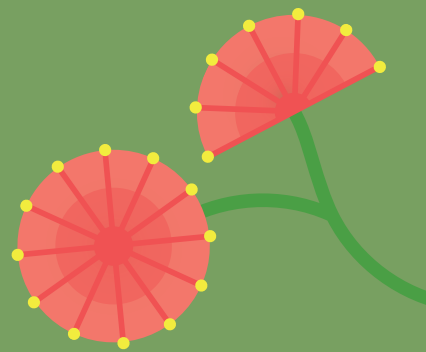
4 Spinning carousel



5 Timber gathering space

PENDERS PARK

Stage 2 - Benefits of Play Activities



Above: Inclusive inground trampolines



Above: Inclusive flying fox (dual ride) with harness seat and pommel seat



Inground Trampolines

The inclusive, inground trampoline will be a first to Darebin. Trampolines are especially great for supporting sensory processing and regulatory bodily movement, building confidence and happiness for all abilities and neurodiverse users. Trampolines connect and balance the position of the body with its movement. Offer health benefits include improving heart health, increasing circulation, building core strength and of course, lots of laughter!

Inclusive Flying Fox

The flying fox is amazing fun for thrill seekers and offers a physically exhilarating play experience. As an added bonus, the proposed flying fox includes two seats so friends can ride together, including a supportive high back harness seat and a standard pommel seat. Designed to bring more excitement into Penders Park, the flying fox gives children the sensation of flight whilst providing unique developmental and physical benefits such as balance, coordination and enhanced body strength.



Above: Forest log rope climbing challenge for senior playspace users



Forest Rope Climbing Challenge

Rope climbing is excellent for development of motor skills, muscle development and improving balancing for senior playspace users. An inclusive, spider web is proposed to ensure all abilities users can playfully engage with their peers. Rope is a flexible material that moves with use and constantly challenges children as they scramble towards new heights. Every action on the rope has a reaction elsewhere as part of the balancing act. Materials will be sustainably and locally sourced.



Above: Inclusive spinning carousel



Above: Timber gathering space proposed on an accessible surface



Inclusive Spinning Carousel

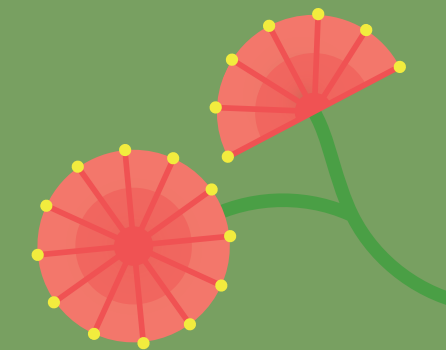
The spinning carousel is an incredibly fun and popular motion activity that fosters social engagement. This item is proposed to be accessed from ground level for more inclusive play. Spinning around help to train the vestibular (movement) system and builds a sense of balance and spatial awareness. The carousel develops social skills by encouraging cooperation and empathy by assisting friends to spin around and helping those to join or exit as they wish.

Timber Gathering Space

A unique, dedicated space for children of all abilities to gather together and foster a shared connection to nature. A special place to plan the next adventure, collect fallen bark or leaves and reimagine the natural world through inclusive and imaginative play.

PENDERS PARK

Stage 2 - Proposed Materials & Surfaces



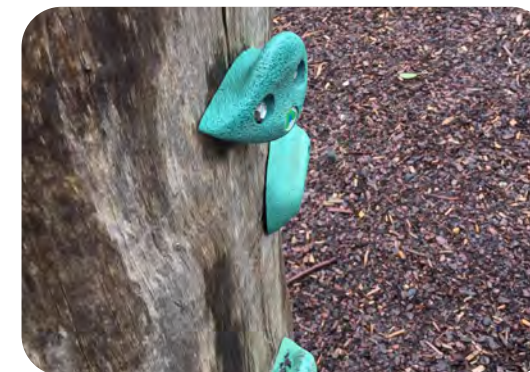
Coloured concrete



Drought tolerant grass



Hardwood posts & natural rope



Climbing grips



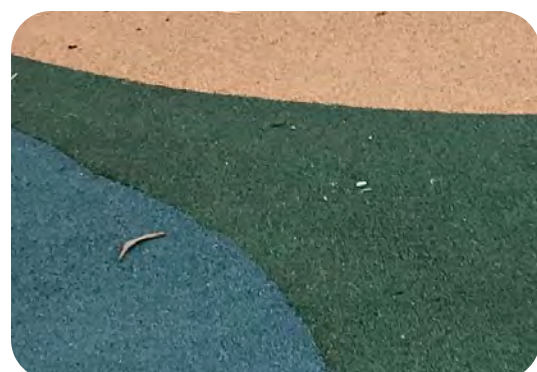
Decorative coloured concrete



Soft fall tan bark



Timber logs and rocks



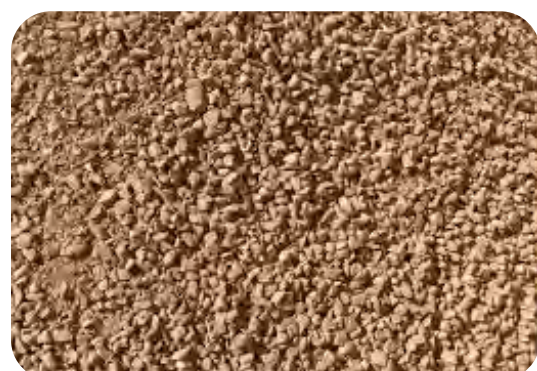
Rubber play safe surface



Mudstone boulders



Australian hardwood elements



Granitic gravel



Hardwood log steppers



Stainless & Galvanised steel

A Note on Materials:

The design focuses on natural materials and objects with open-ended play possibilities, to encourage children to engage in richer play experiences while fostering connections to nature.

Locally and sustainably sourced Australian materials and hardwoods will be emphasised throughout the playspace.

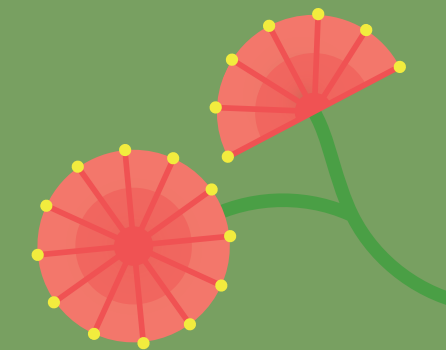
The colour of accessible surfaces will blend in with the environs and loose materials such as mulch, sand and pea gravel. This will enhance the parks natural setting and beauty.

Interwoven in and around the playspace will be multi-layered, indigenous and native flowering vegetation, to enhance biodiversity, providing soft natural buffering of the playspace and improving habitat for local fauna.



PENDERS PARK

Stage 2 - Proposed Planting Palette



GROUNDCOVERS



Casuarina glauca



Grevillea 'Bronze Rambler'



Myoporum parvifolium



Westringia 'Mundi'

LOW SHRUBS / BUSH FOOD



Adenanthos sericeus Dwarf



Banksia spinulosa



Crysocephalum semipapposum



Correa 'Little Cate'

TUSSOCKS / SEDGES



Linum marginale



Lomandra 'Little Con'



Poa morisii



Pyncnosorus globulus

CANOPY / SHADE TREES



Eucalyptus sideroxylon



Corymbia citriodora 'Scentuous'
sny 'Dwarf Pink'



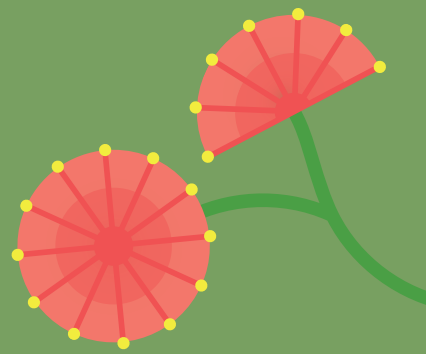
Eucalyptus 'Little Spotty'



Eucalyptus 'Silver Princess'

PENDERS PARK

Penders Park and Location of Playspace



Thank You

A sincere thanks to community members, big and small, that shaped this unique project.

Special thanks to members of the community project control group who dedicated their time to this project.

For more information visit www.yoursaydarebin.com.au/penderspark

