

# Edwardes Lake Park design concept



**1** SOUND PLAY  
Wooden Sound Arc

**2** The playspace design and planting will ensure sight lines are kept open to enable passive surveillance and to maintain a sense of safety. This is also to reduce the potential for vandalism and graffitiing of the playspace

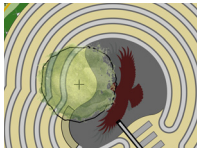
**3** Canopy trees be will be planted to ensure sufficient shading of the playspace

**4** Improved accessibility to the playspace through the inclusion of a gravel path and soft fall rubber under accessible play elements such as the Spinner and Traktor Tire Swing

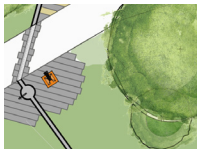
## LEGEND



Wooden Sound Arc with stone wall



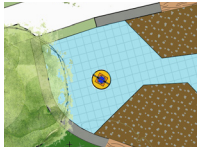
Bunjil stencil within the Bluestone Pitcher Stepping Stone Mindfulness Maze



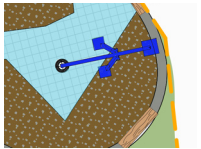
Conference Tube on bluestone paving



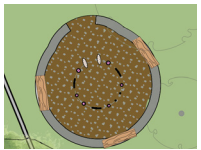
Water feature - water Rill



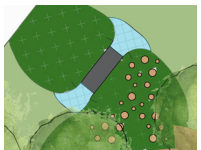
Accessible spinner on Soft Fall rubber



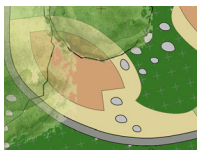
Traktor Tire Swing on SF rubber and SF mulch



SF mulch meeting circle with loose parts play and stone wall



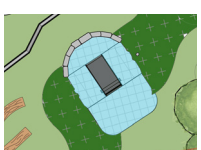
Concrete tunnall through mounds with SF rubber



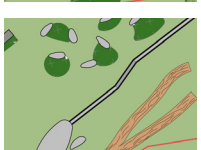
Timber decks with rock steppers



Timber balance beam structure



Mounded Stainless Steel Slide with SF rubber



Rocks and logs for nature play