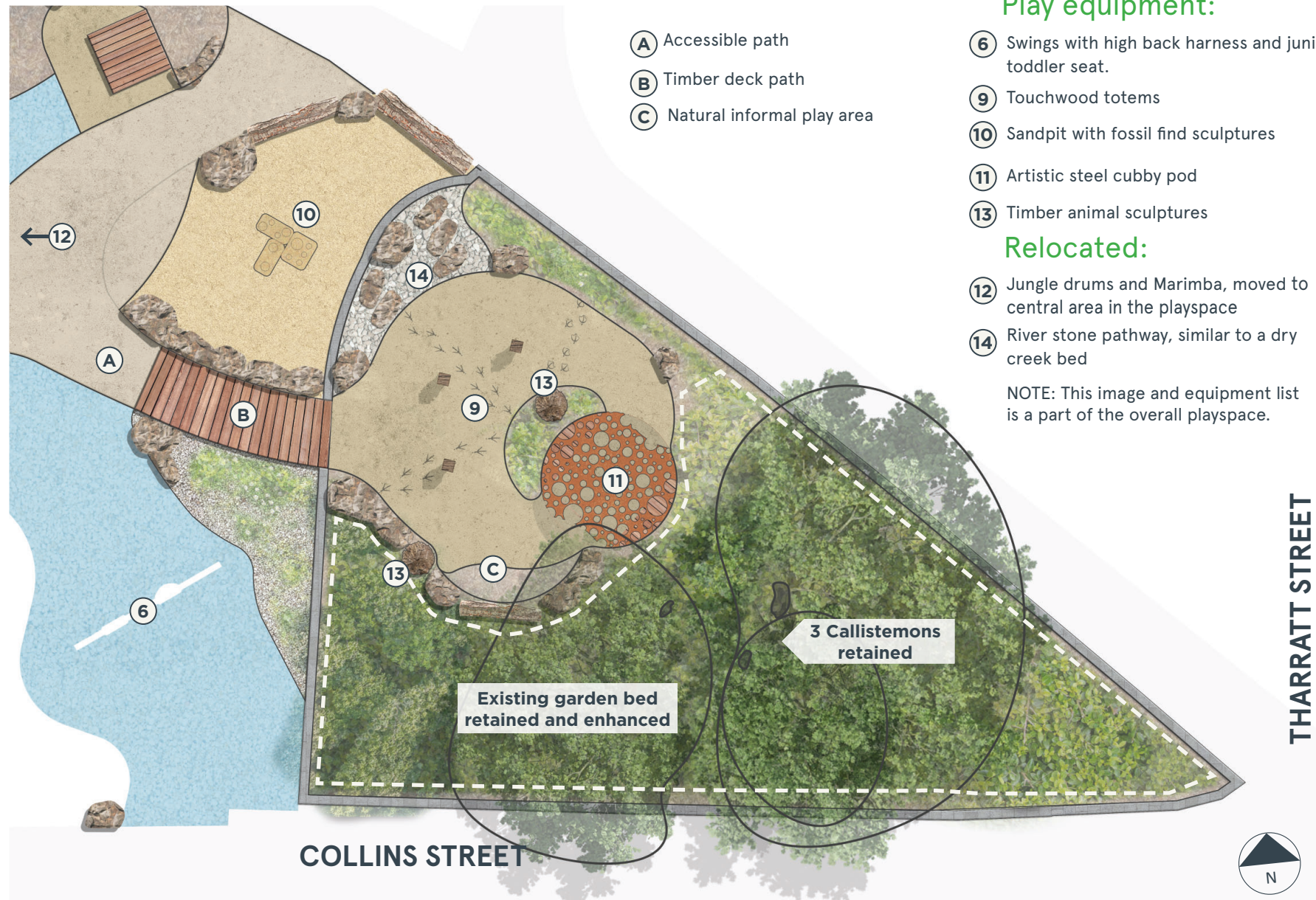


What's the final design for the garden bed?

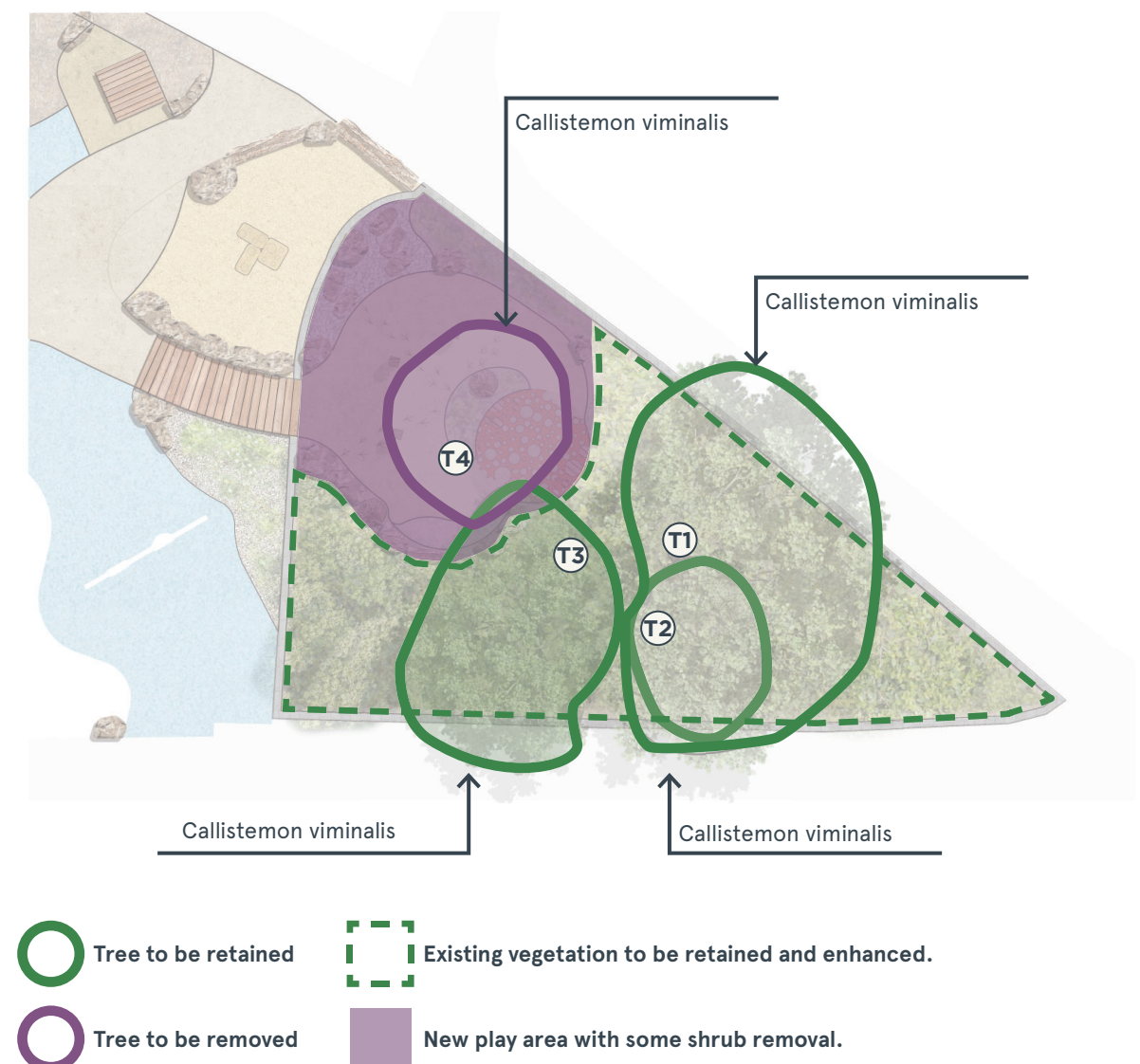
We changed the previous design based on the community feedback we heard in January. We heard from the community that the existing Callistemon trees and vegetation in this garden bed were valued. See what we've changed below to ensure the park improvements are well-loved by the whole community.

Final Design:



Vegetation Retention and Removal Plan:

In the final design, three of four existing Callistemon trees will be retained and one tree will be removed for safety reasons. Most of the vegetation in the garden bed will be retained.



For more information on this project visit www.yoursaydarebin.com.au/penderspark