

# REIMAGINING RUTHVEN

## Playspace Design Concept

February 2021

For Community Engagement

# REIMAGINING RUTHVEN MASTER PLAN IMPLEMENTATION

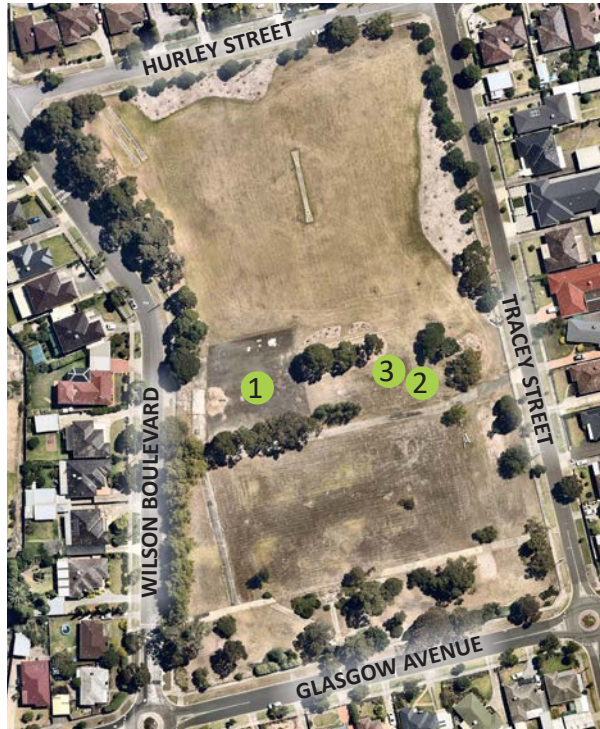
The Reimagining Ruthven Master Plan was developed in close collaboration with the community to create Darebin's newest park on the site of the former Ruthven Primary School.

One of the first steps of implementation of the Master Plan is the playspace, which will form a key focal point in the heart of the new park.

The design of the playspace responds to the Master Plan directions and the feedback collected at the Family Fun day in 2017 and at the face to face engagement held in 2019.

This includes:

- A bushland sanctuary theme
- Play equipment that emphasises natural materials and colours, and is not visually dominant in the landscape
- A focus on indigenous plantings as well as robust native species, which will provide interesting and tactile elements to engage children in their environment
- Seating, community meeting spaces and amenities to support all park users.



Ruthven Park Aerial Photo January 2021



- 1 Existing asphalt surface adjacent to the proposed playspace (looking east). This area could be line marked with a simple scooter track or games. One Lemon Scented Gum will be removed to allow for a new path (through a separate project). This tree is furthest to the right in this photo, which has structural problems.

## The Playspace Site



- 2 The playspace site, viewed from the main entrance off Tracey Street (looking west)



- 3 The playspace site, with the area for informal nature play in the background closer to the asphalt area (looking west)

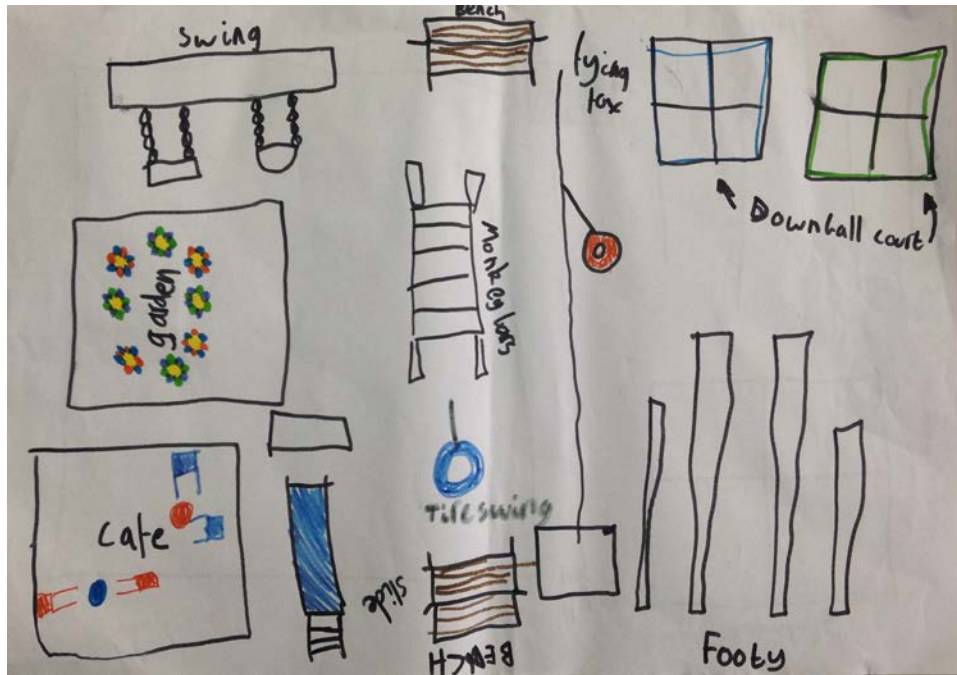


# COMMUNITY FEEDBACK

Previous feedback from the community in relation to the playspace included requests for:

- Slides and swings
- Climbing and adventure play opportunities
- Nature play
- Multi-generational play opportunities
- Basketball
- Flying fox
- Scooter trail

Many of these ideas have been integrated into the playspace design concept, while others can be considered in future stages of the Master Plan implementation.



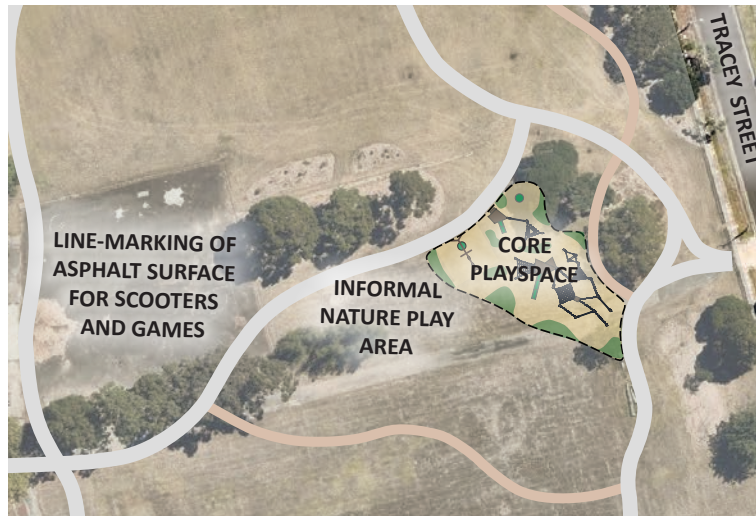
The community provided lots of great ideas for the new park and playspace

# PLAYSPACE LOCATION



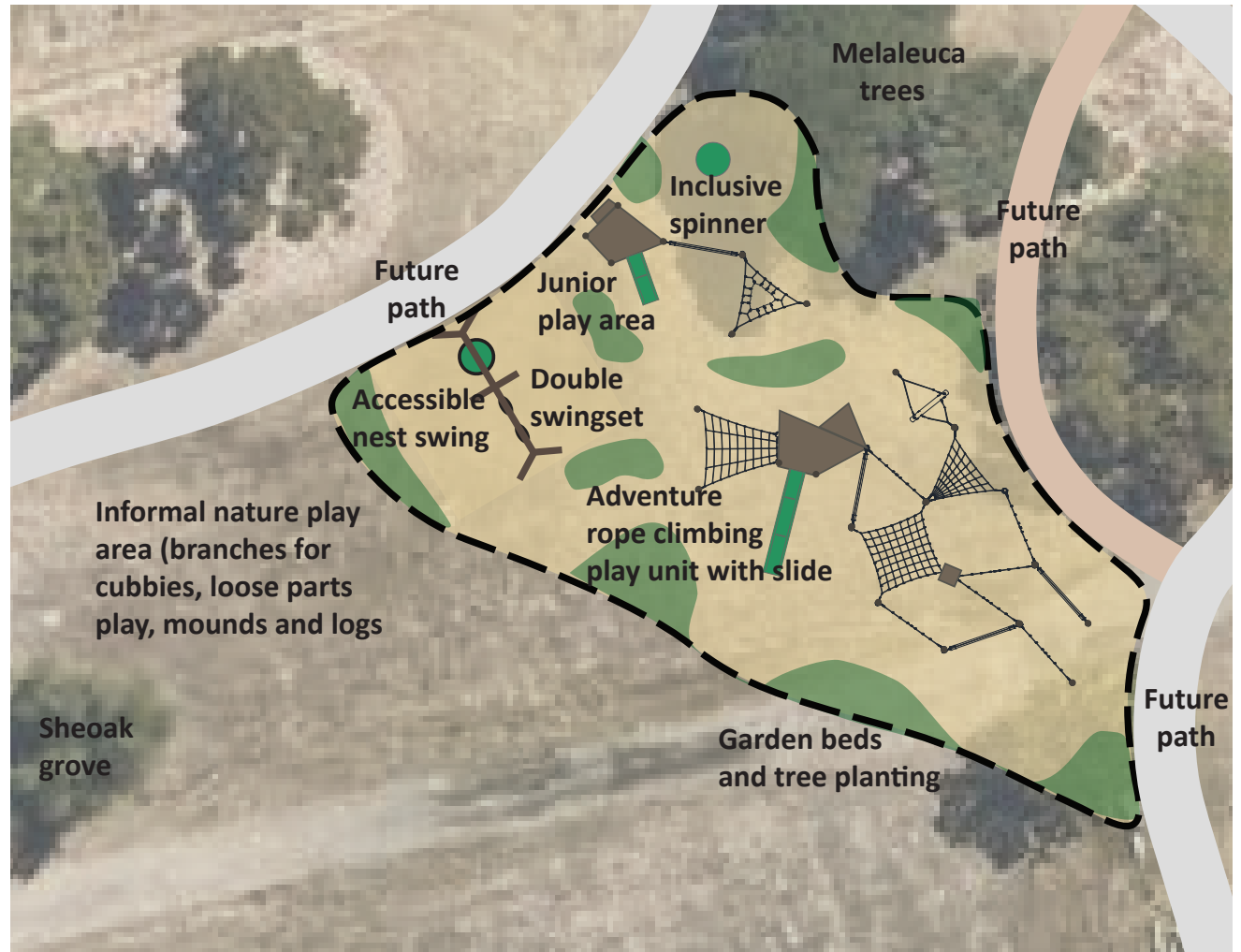
The Master Plan above shows the location of the new playspace and the future path network

# PLAYSPACE DESIGN CONCEPT



## Key elements of the playspace design concept

- Custom designed senior rope climbing and recycled timber pole play unit with fibreglass wave slide (for ages 5-12+)
- Custom designed junior/toddler play unit with double fibreglass slide, using similar materials to the senior unit
- Inclusive spinner
- Some elements will be made accessible from the future path network, including the nest swing, spinner and part of the toddler unit
- Rocks and logs for balancing and sitting
- Informal nature play opportunities adjacent to the core playspace (cubby building materials, mounds for climbing, logs, loose parts play and exploring the sheoak grove)
- Seat and a bin
- Garden beds and tree planting



- Line-marking of scooter trail and games on the existing asphalt surface
- Melaleuca trees will be retained and pruned to ensure safety, and will be removed in coming years as they reach the end of their lives and the new trees grow.

## CONCEPT PLAN

An indicative layout is shown above for play equipment being customised for the playspace. Refer to the example images on the next two pages for an illustration of how this might look.



# PLAYSPACE DESIGN EXAMPLE IMAGES



Timber swing set



Small custom junior/toddler unit with fibreglass slide



Log steppers and rocks



Custom senior rope climbing unit with fibreglass slide



Inclusive spinner  
<https://www.moduplay.com.au>



Bushland theme with robust and interesting native and indigenous plantings. Existing Melaleuca trees (right) to be retained and pruned in the short term



Mounds for climbing



Recycled natural timber power poles for custom play equipment and log steppers





# INFORMAL NATURE PLAY AREA



Cubbies and loose parts play



[www.natureplaylearning.com.au](http://www.natureplaylearning.com.au)



Path through sheoak grove (to be thinned out)



Logs onsite for use in playspace

# WE WANT YOUR FEEDBACK!

We are excited to collect community feedback on the playspace design concept!

Your feedback will help us to finalise the design for construction of the playspace in late 2021. The playspace will be constructed with State Government funding assistance.

Please go to [www.yoursaydarebin.com.au/ruthvenplayspace](http://www.yoursaydarebin.com.au/ruthvenplayspace) to find out more about how to give your feedback.

You can also email your comments through to [city.design@darebin.vic.gov.au](mailto:city.design@darebin.vic.gov.au), or call 8470 8888 to speak to a City Designer about the project.



<http://ceril.net>



<https://www.pentagonplay.co.uk/>

Simple scooter trail line marking on existing asphalt surface