

PENDERS PARK

The all abilities playspace is coming!

The City of Darebin is excited to share the final design for this first stage of an amazing new playspace!

Children of all abilities will be able to:

- discover fossils in an immerseive sand pit
- share the swing experience with younger siblings and friends
- interact with roaring spinners
- enjoy a slide ride with friends
- create musical soundscapes in an open space
- discover sensory touchwood totems
- hide and seek with friends in an artistic cubby
- enjoy rock stacking as tactile play
- discover animal sculptures within natural settings
- appreciate habitat and fauna
- socialise with friends through informal opportunities

More play activities:

- adventure play with rock mounds, underdeck caves and log climbing
- mini-trail balancing challenges to develop agility
- natural log thrones encouraging imaginative play
- monkey bars for body coordination and strengthening
- see-saws for coordinating play with friends



the place
to live

Final Design

This playspace is the culmination of two years of extensive community engagement, led by a community Project Control Group and delivers on the community vision to create an inclusive gathering place for our diverse and changing community to enjoy.

Final Stage One Playspace



Playspace Activities



Natural adventure rock climbing play



Mini trail balance challenge for coordination and agility



Monkey bars for agility and body strengthening.



Adventure climbing clamber log



Spinning roasters for interactive play



Swings with high back harness and junior seat



Log throne seats for imaginative play



See-saw for coordination with upto four friends



Touchwood totems for sensory play



Sandpit with fossil find discovery digging



Artistic cubby for hide and seek, reflective play



Jungle drums & marimba for creative musical play



Artistic animal sculptures for discovery sensory play



Stone feature to encourage tactile play rock stacking

Images shown are indicative and installed equipment may differ slightly in appearance.

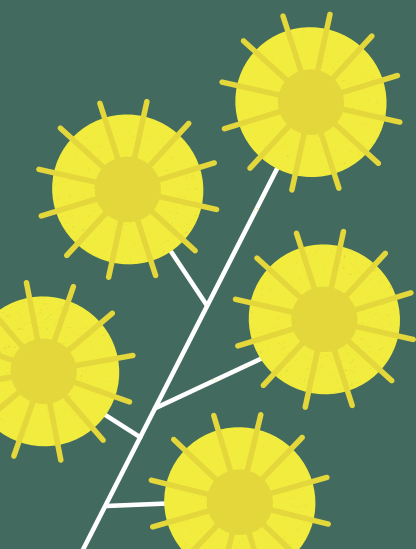


*A vision that is
inclusive, sustainable
and welcoming*

*Children of all abilities will be able to
have fun and make new friends in an
engaging place of play.*

This playspace is one of many planned improvements for Penders Park, which will be delivered over future years. These park improvements are guided by community priorities identified in the Penders Park Master Plan.

For more information call City of Darebin on 8470 8888 or visit www.yoursaydarebin.com.au/penderspark



Thank you

A sincere thanks to community members, big and small, that shaped this unique project. Special thanks to members of the community project control group who dedicated their time to this project.

What's Happened So Far?

The City of Darebin has been working closely with a community-led Project Control Group and the wider community for the last two years to develop a master plan for Penders Park. The first part of the plan to be brought to life is stage one of a custom built all-abilities playspace.

Recent Changes to Design

We've changed the design in the south-east corner garden bed based on community feedback we heard in January. See what we've done below to ensure park improvements are well-loved by the whole community.



Previous Design



Final Design



What You Said...



THE CALLISTEMON TREES ARE SPECIAL

Some members of the community really love the existing trees and shrubs in the garden bed, particularly the Callistemon trees.



PROTECT HABITAT AND BIRDLIFE

The connection to the birdlife and animals that visit this garden bed is special to the community.



INCLUDE ALL PLAY ELEMENTS

All play elements and features should be included in the final stage one design.



PRESERVE THE PLAYSACE VISION

The all abilities playspace vision, play value and design integrity should be preserved.



SIGHTLINES AND VISIBILITY

Sightlines and visibility across play areas and from the carpark to the toilet block is important.



RETAIN THE GARDEN SHAPE

The shape of the garden bed and the bluestone edging is meaningful to the community.

What We've Done...



RETAINING THE CALLISTEMON TREES

Three of four existing Callistemon trees and most existing garden bed vegetation will be retained. One tree will be removed for safety reasons.



PROTECTING HABITAT AND BIRDLIFE

Habitat will be protected by reducing the garden bed play area and pathway, while still allowing children to appreciate nature. Many new wildlife attracting trees and shrubs will be planted.



ALL PLAY ELEMENTS INCLUDED

Every item of play from the previous design will be built, including landscape features for rock stacking, in this final design.



PLAYSPACE VISION PRESERVED

The vision and design integrity for the all abilities playspace have been preserved and are a core focus in the final design.



SIGHTLINES AND VISIBILITY

Sightlines and visibility are maintained across all play areas, and from the carpark to the toilet block.



RETAINING THE GARDEN SHAPE

The garden bed shape and bluestone edging will be retained with one small opening for a path.