

29 January 2020

In reply please quote reference:

**Ref: A5411120**

Dear Community Member

### **Building a new All Abilities Playspace at Penders Park**

We are excited to let you know that works are now underway to build an All Abilities Playspace at Penders Park.

The project is the culmination of two years of consultation and delivers on the community's vision of creating an inclusive, gathering place for our diverse and changing community to enjoy. Children with all abilities will now be able to have fun in an engaging place to play and make new friends. As well as a sensory play area and forest walk, the playground will feature new swings and an accessible cubby house. New seating areas and community spaces and two accessible parking bays will also be welcome additions to Penders Park.

In every situation the retention of trees is seen as a priority for Council, and we understand the importance of having green spaces and vegetation in our city. Overall the plan for the playspace area will see the planting of 500 new plants and increase the number of trees by 13, all of which will be native. Three Callistemon trees on Collins Street will be replaced with other taller trees in the nearby area so that parents can see their children safely playing. Three mature trees will be planted in place of the Callistemon trees early in this planting season, which begins in April. Another 40 trees will also be planted elsewhere in the park.

Making the forest walk area accessible and ensuring that children can be seen by parents were key reasons for this part of the design of the playspace and community feedback highlighted how important it was to parents to see their children playing.

The All Abilities Playspace will be delivered in two stages, with stage one works scheduled for completion in 12-14 weeks, weather permitting. The existing playground will remain open during this time.

The new playspace is the first of many improvements to come at Penders Park, which will be delivered over multiple years, as guided by the priorities the community identified in the master plan.

For further information on the Penders Park Master Plan and the new All Abilities Playspace, please see the enclosed concept map, go to [www.yoursaydarebin.com.au/penderspark](http://www.yoursaydarebin.com.au/penderspark) or contact 8470-8381.

Yours sincerely,



**Rachel Ollivier**  
**General Manager City Sustainability & Strategy**



Darebin City Council  
ABN 75 815 980 522

**Postal Address**  
PO Box 91  
Preston VIC 3072  
T 03 8470 8888  
[darebin.vic.gov.au](http://darebin.vic.gov.au)

**National Relay Service**  
TTY dial 133 677  
or Speak & Listen  
1300 555 727 or  
[relayservice.gov.au](http://relayservice.gov.au)  
then enter  
03 8470 8888

**Speak your language**  
T 03 8470 8470  
العربية  
繁體中文  
Ελληνικά  
हिंदी  
Italiano  
Македонски  
Soomalii  
Tiếng Việt

# PENDERS PARK ALL ABILITIES PLAYSPACE



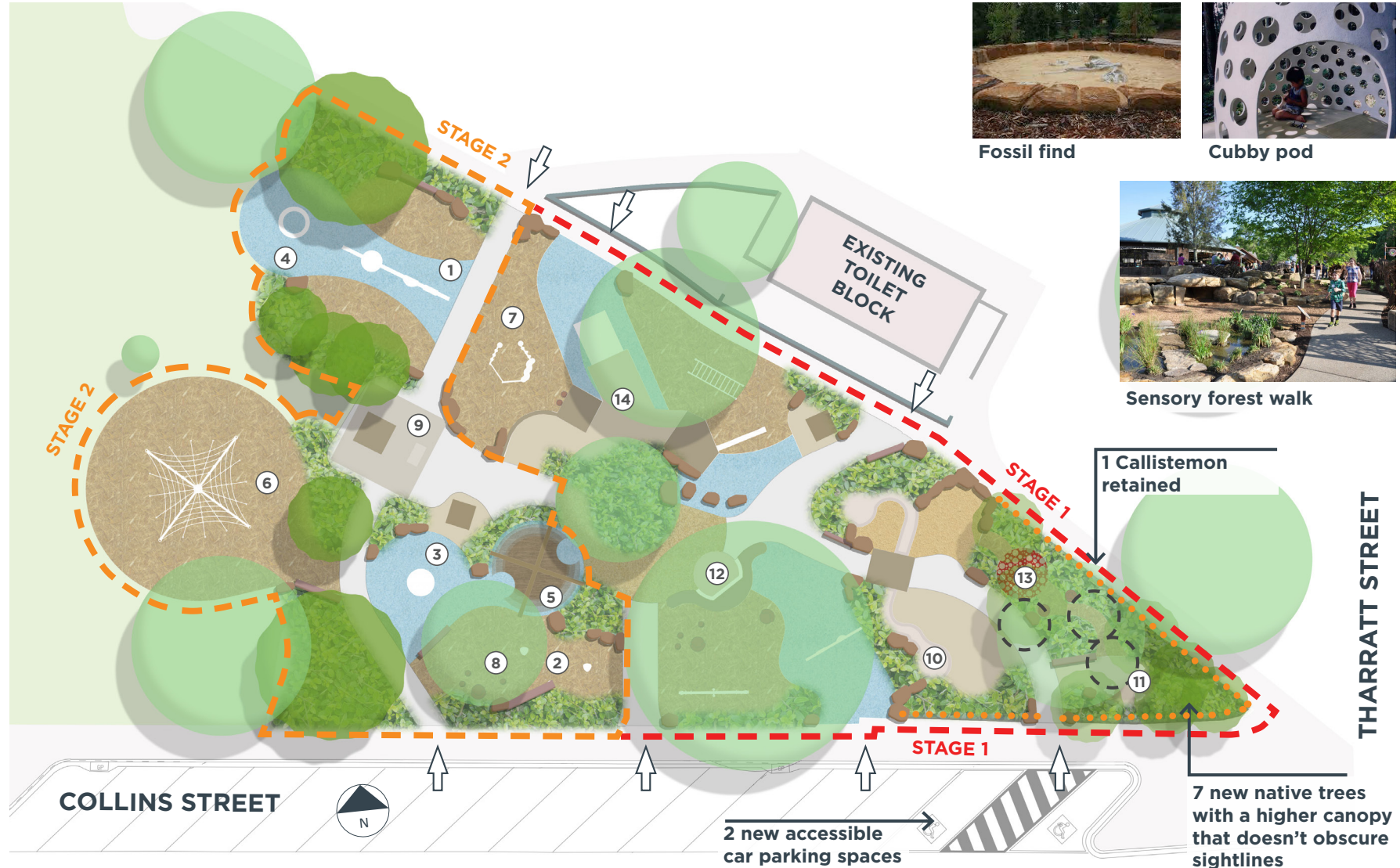
Rock climb mound



Willow branch hut

## NEW PLAY ELEMENTS

- ① Double bay swing
- ② Galaxy Spica's
- ③ Carousel
- ④ Motion trampoline
- ⑤ Willow pod shelter
- ⑥ Relocated existing net climber
- ⑦ Balance challenge
- ⑧ Timber throne and steppers
- ⑨ Timber shelter with double BBQ
- ⑩ Dry creek bed
- ⑪ Sensory forest walk
- ⑫ Wobbly wall and snake deck
- ⑬ Corten steel cubby pod
- ⑭ Slide mound



Fossil find

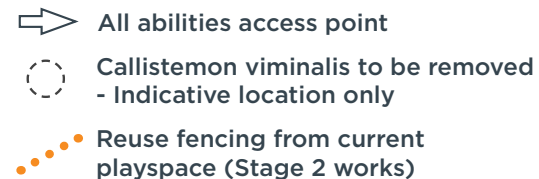
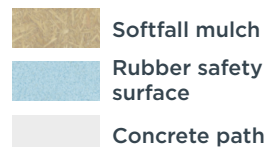
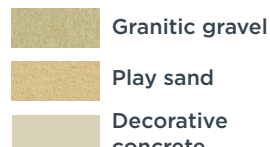
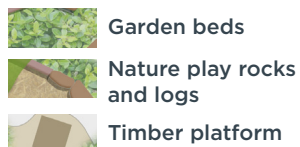
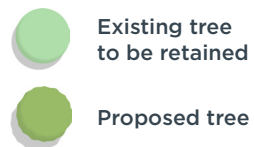


Cubby pod



Sensory forest walk

## LEGEND





# PENDERS PARK ALL ABILITIES PLAYSPACE



Artist impression of new entry points and planting to new All Ability playspace

The community vision for Penders Park is:  
*'Penders Park is a significant gathering place for our diverse and changing community. As a district park, it's a place for play, celebrating, active and passive recreation and connecting with nature'*



View taken from Collins street: existing garden beds at south-east corner of Penders Park